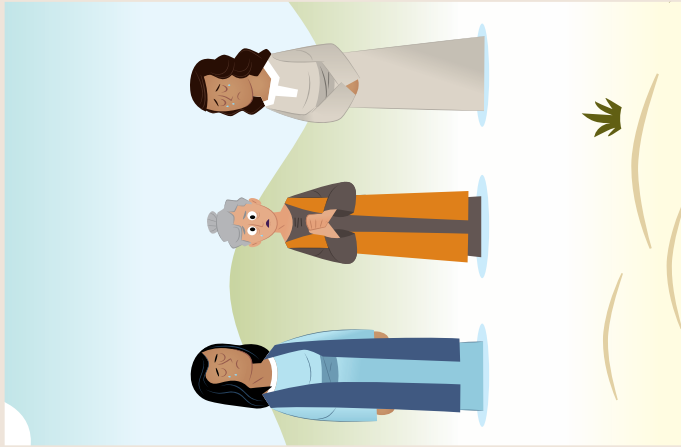
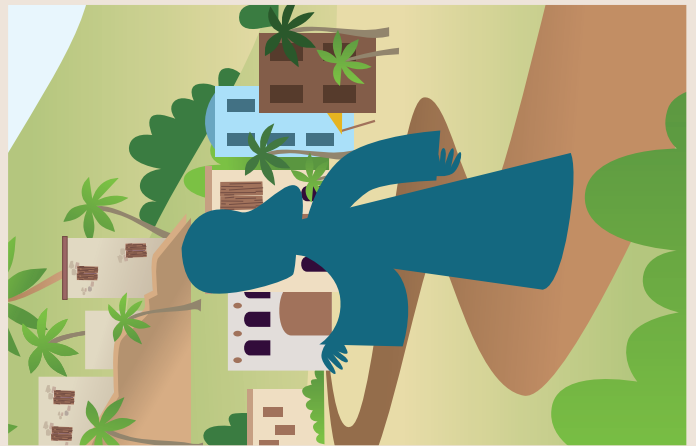




There was a famine in Bethlehem, so Naomi and her family moved to Moab.



While they were in Moab, Naomi's husband and two sons died, leaving her with her daughters-in-law, Ruth and Orpah.



Naomi decided to return to Bethlehem after hearing that God had provided food there.



Orpah went back home to her family, but Ruth refused to leave Naomi, saying, "Where you go, I'll go. Your people will be my people. Your God will be my God." (Ruth 1:16, NIV)





Boaz showed kindness to Ruth! He told his workers to leave extra grain for her and made sure she was safe.



Ruth and Boaz had a son named Obed, who became the grandfather of King David. Jesus was later born into this same family line!



To help provide food, Ruth went to gather grain in a field that happened to belong to a man named Boaz.



Boaz had a special relationship to Naomi's family—he was someone who could protect Naomi's family. He was a family protector! So he later married Ruth.



1. You're starting a new school and don't know anyone.
2. Your family is moving to a new town, and you're nervous about leaving everything behind.
3. You are trying out for a sports team, but you're afraid you won't be good enough.
4. You have to speak in front of the class for a presentation, but you feel really nervous.
5. Your friend is being left out, and you feel unsure about standing up for them.
6. You want to invite a friend to church, but you're scared they might say no.
7. You're learning a new skill (like playing an instrument or trying a new hobby), but it feels really hard.
8. You made a mistake and need to apologize to someone, but you're afraid of their reaction.
9. You're about to start a new grade, and you don't know what your teacher or classmates will be like.
10. You feel like God is leading you to do something kind for someone, but you don't know how they'll respond.